



FOR SALE or LEASE

2000 Burton Street SE, Grand Rapids, MI 49506

Near the intersection of Breton and Burton in East Grand Rapids.



## Medical/Office Building

### Investment Opportunity!

Spacious office suite for lease with ample on site parking. Easy to find location ideal for many dental or medical users. This building is also for sale as an owner occupied or traditional investment opportunity. Long standing good synergy among the current tenants. Quick access to the 28th Street retail corridor shopping and restaurants.

## Property Information

### Demographics for a 3 Mile Drive Time

Median HH Income:	\$76,198
Population:	131,269
Median Age:	33

Rental Rate (PSF NNN):	\$7.50
Sale Price:	\$800,000.00

Space Available: Suite 2 1,698 sqft

Building Size:	14,201 sqft
Gross Land Area:	1.73 acres
Available:	At Close

Additional retail and development parcels are available  
*Information deemed reliable but not guaranteed.*

**m retail**  
www.mretail.com

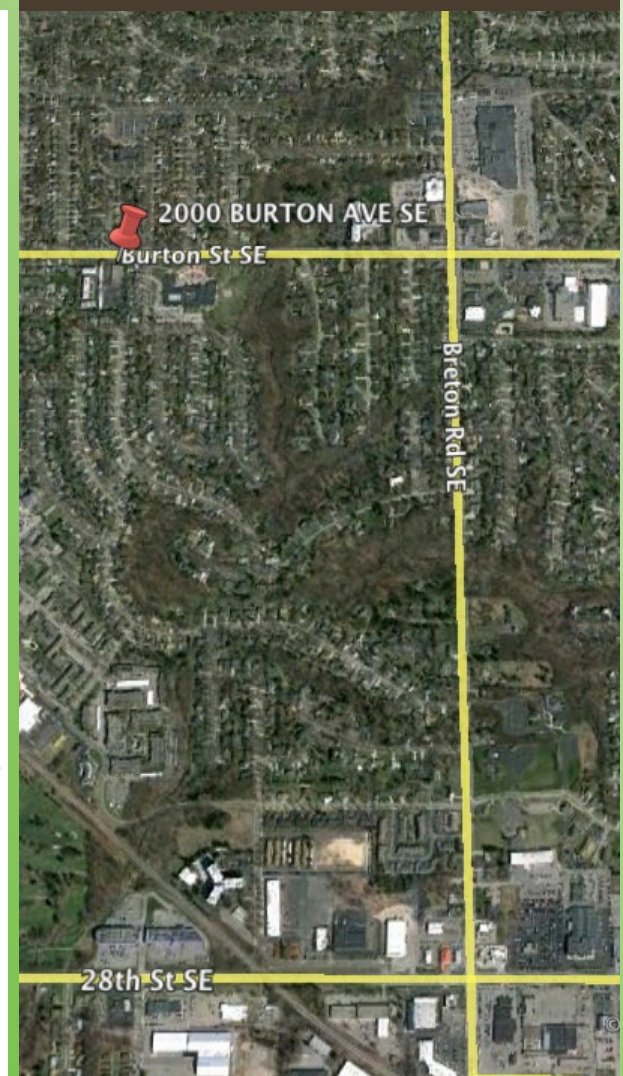
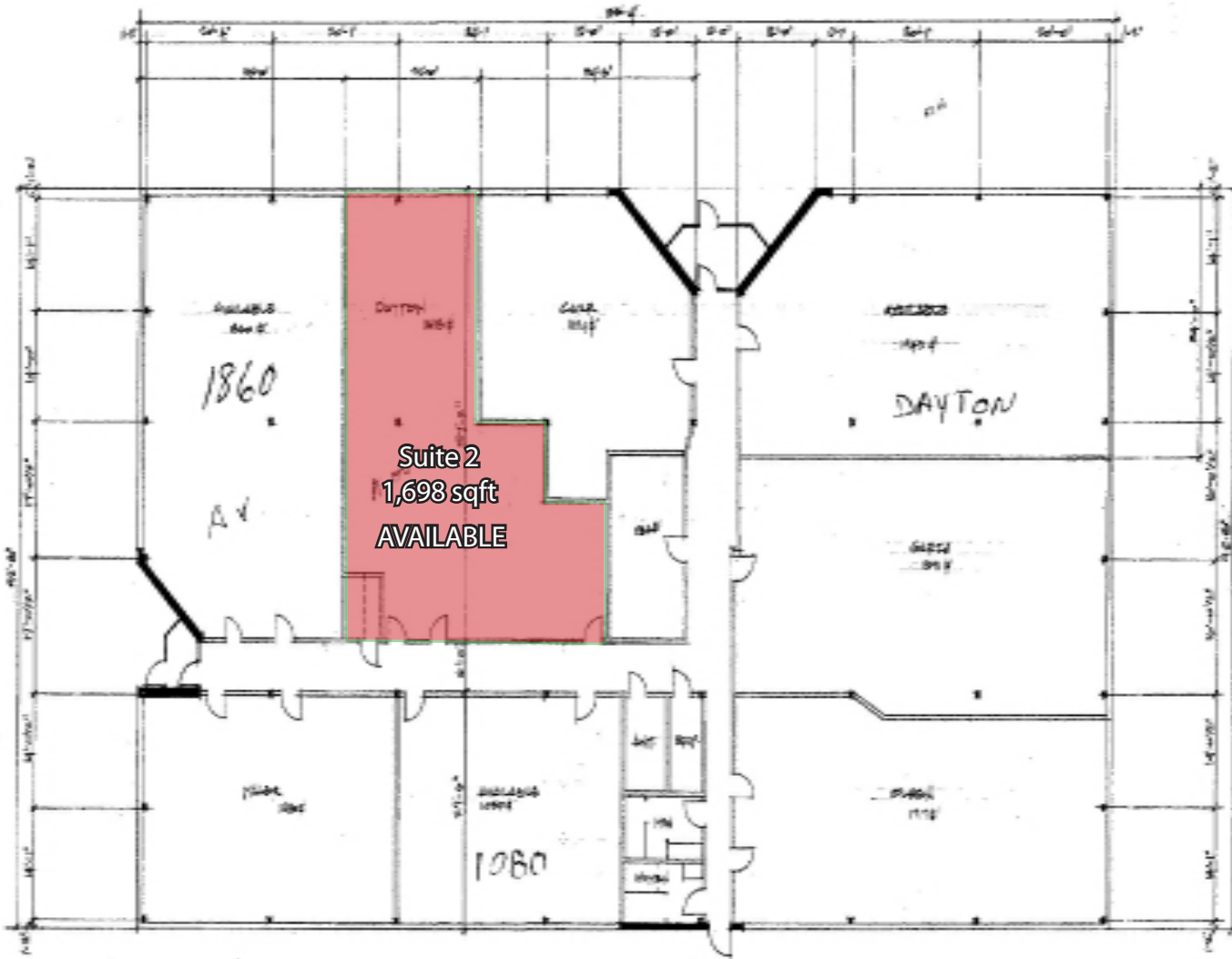
Chad Clemens  
(616) 881-2888



FOR SALE or LEASE

# 2000 Burton Street SE, Grand Rapids, MI 49506

Near the intersection of Breton and Burton in East Grand Rapids.



**m retail**  
www.mretail.com

Chad Clemens  
(616) 881-2888